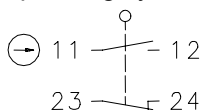


### Series GC

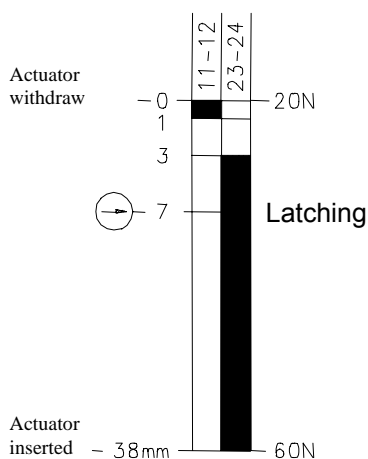
Description **GC-U1Z VT 90GR K-RAST**


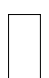
Article number **6122100724**

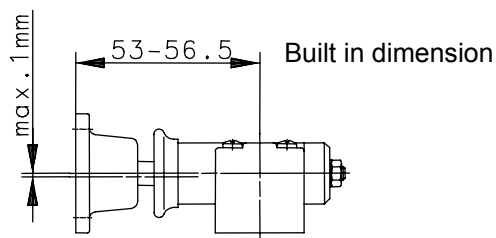
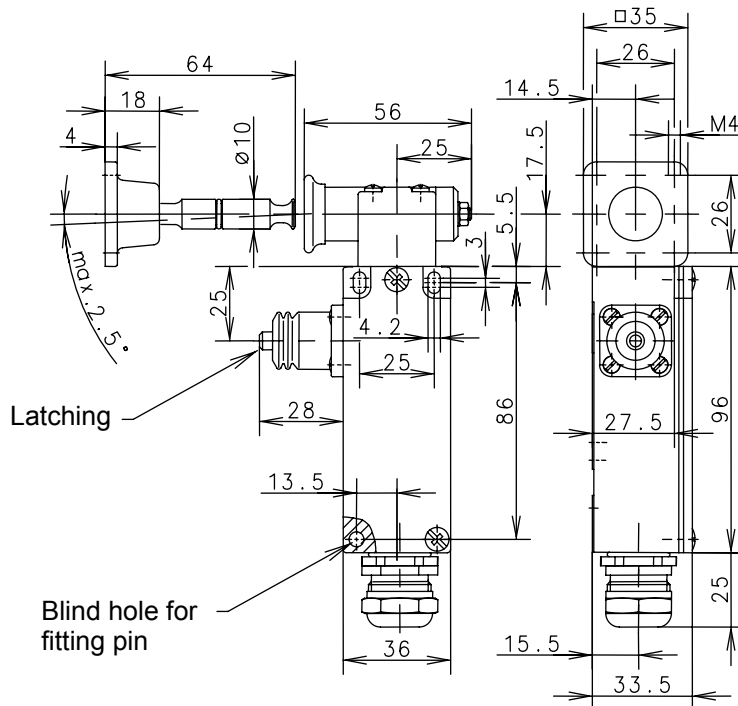
#### Operating symbol




#### Operating diagram





 Tolerances  
 Operating point:  $\pm 0,3\text{mm}$ ;  
 Operating torque:  $\pm 10\%$



#### Electrical data

|                                 |   |                                   |
|---------------------------------|---|-----------------------------------|
| Rated insulation voltage        | $U_i$   | 400 VAC                           |
| Conv. thermal current           | $I_{the}$   | 10A                               |
| Utilization category            |   | AC-15, $U_e/I_e$ 240V/3A          |
| Positive opening NC contact     |  | acc. to IEC/EN 60947-5-1, Annex K |
| Short-circuit protective device |   | Fuse 10A gL/gG                    |
| Protection class                |   | I                                 |

This document will not become the contractual basis; the details included herein do not constitute any descriptions of expected conditions, so that warranties/claims for defects on account of possible variations of the actual qualities from the qualities described herein are explicitly excluded. All rights reserved. Specifications subject to change without notice!

Date of issue: 08.02.2008 / Page 1 of 2  
 Document: 6122100724\_en.doc / Last update: 1 / 2046-08

| <b>Mechanical data</b>   |  |
|--------------------------|--|
| Enclosure                | Die-cast aluminium   |
| Cover                    | Sheet aluminium  |
| Actuator                 | Separate actuator  |
| Latching                 | Forced disconnection and latching of normally closed contacts ( 11 – 12 )                    |
| Ambient air temperature  | -30°C ... +80°C  |
| Contact type             | 1 NC, 1 NO (Zb)  |
| Mechanical life          | 1 x 10 <sup>6</sup> operating cycles   |
| Switching frequency      | ≤ 10 / min.  |
| Assembly                 | 2 x M4   |
| Connection               | 4 screw terminals (M3,5)   |
| Conductor cross-sections | Solid: 0.5 ... 1.5mm <sup>2</sup><br>Litz wire with ferrules: 0.5 ... 1.5mm <sup>2</sup>     |
| Cable entrance           | 1 x cable gland<br>(M20x1,5; clamp-range 6 – 12mm),  |
| Weight                   | ≈ 0,37 kg  |
| Installation position    | Operator definable   |
| Protection type          | IP65 acc. to IEC/EN 60529  |
| <b>Standards</b>         | VDE 0660 T100, DIN EN 60947-1, IEC 60947-1<br>VDE 0660 T200, DIN EN 60947-5-1, IEC 60947-5-1 |
| <b>EU Conformity</b>     | <b>CE</b>  |

### Notes

The specified protection classification (IP code) applies only when the cover is closed and the appropriate cable is used, in accordance with the clamping range of the above mentioned cable gland.

#### Mounting:

When used as safety switch pay attention to EN 60204 (use NC-contacts).

Also secure by a set pin (hole within the bottom of the case).

Actuator to be fixed with 4 screws M4 at the movable guard.

Please pay attention to the specified maximum of misalignment of the actuator.

Position of the actuator head determined at works, must not be modified.

Screws obviously secured.